

# Mobility Innovation Hub

Karolina Konicarová



Connect  
& Support



2021

# Country for the Future

## Innovation Strategy 2030

- Czech Republic as a innovative & more competitive country by 2030
- Investment into R&D, start-ups & spin-offs
- Financial programme:
  - Creation of innovative companies (high-tech start-ups), their development and internationalization
  - Building of innovation infrastructure with focus on digital services and artificial intelligence
  - Development of business environment
  - Introduction of innovation into practice



Source: [www.countryforfuture.com](http://www.countryforfuture.com), 2020



Connect  
& Support

# Technology Incubation

## TECHNOLOGY INCUBATION

- **Scouting** of the projects and ideas for incubation
- **Pre-incubation** of less developed projects before entering the incubation
- **Incubation** of start-ups and spin-offs
- **Investment** and match-making services

**7**  
years of Project  
duration

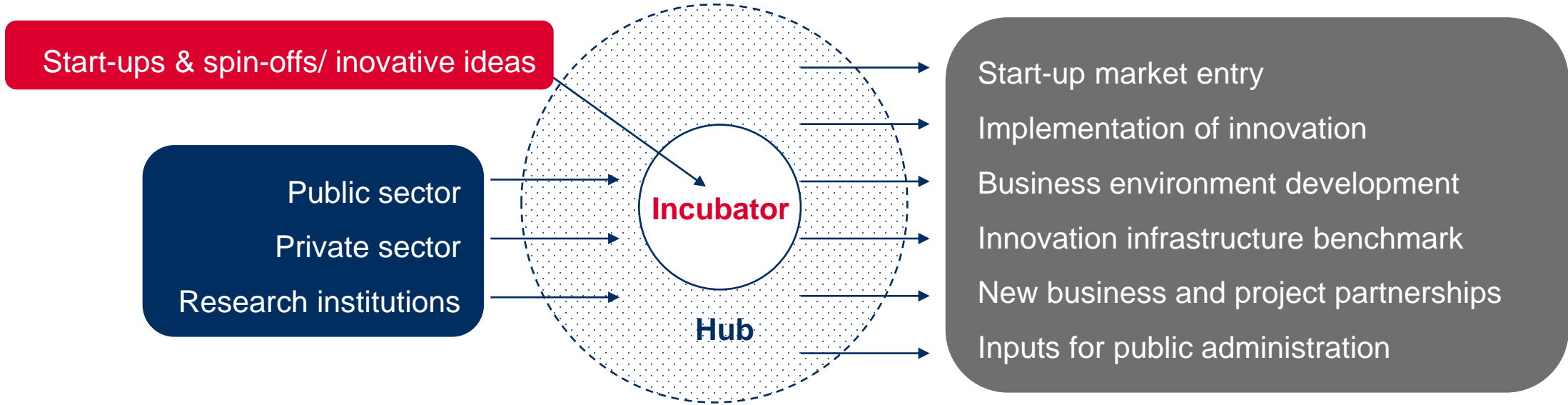
**7**  
incubation  
programmes

**304**  
incubated  
projects expected

**200 000**  
EUR(max) for  
each company



# Hubs & Incubators



**MOBILITY  
INNOVATION  
HUB**

**CERN  
BIC**

**AI  
HUB**

**CREATIVE  
BIC**

**ECOTECH  
HUB**

**SPACE  
HUB**

**CRISIS  
RESPONSE  
HUB**

# Mobility Innovation Hub

- Long tradition of automotive industry in the Czech Republic
- New challenges and trends in mobility
- Memorandum on the Future of Automotive Industry
- **Mission**
  - Grasp new trends in automotive and related sectors
  - Enhance innovation and competitiveness of the Czech Republic
  - Support transfer of new technologies into practice
  - Establish closer cooperation between private sector, academia & public sector



# Main Focus

## Relevant Areas



### Alternative drives

Drives using alternative fuels and energy sources instead of fossil fuels as a means of energy delivery for transport purposes.



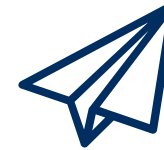
### Autonomous driving

Vehicles that do not need a driver for their operation and that are guided by computer systems.



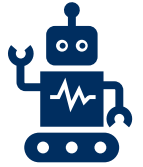
### Digitalization

Interconnected solutions including intelligent transport systems, software, automobile electronics, assistance systems, etc.



### Logistics

Automatic logistics management based on sharing data about products, processes, etc. and their automatic transfer between database systems.

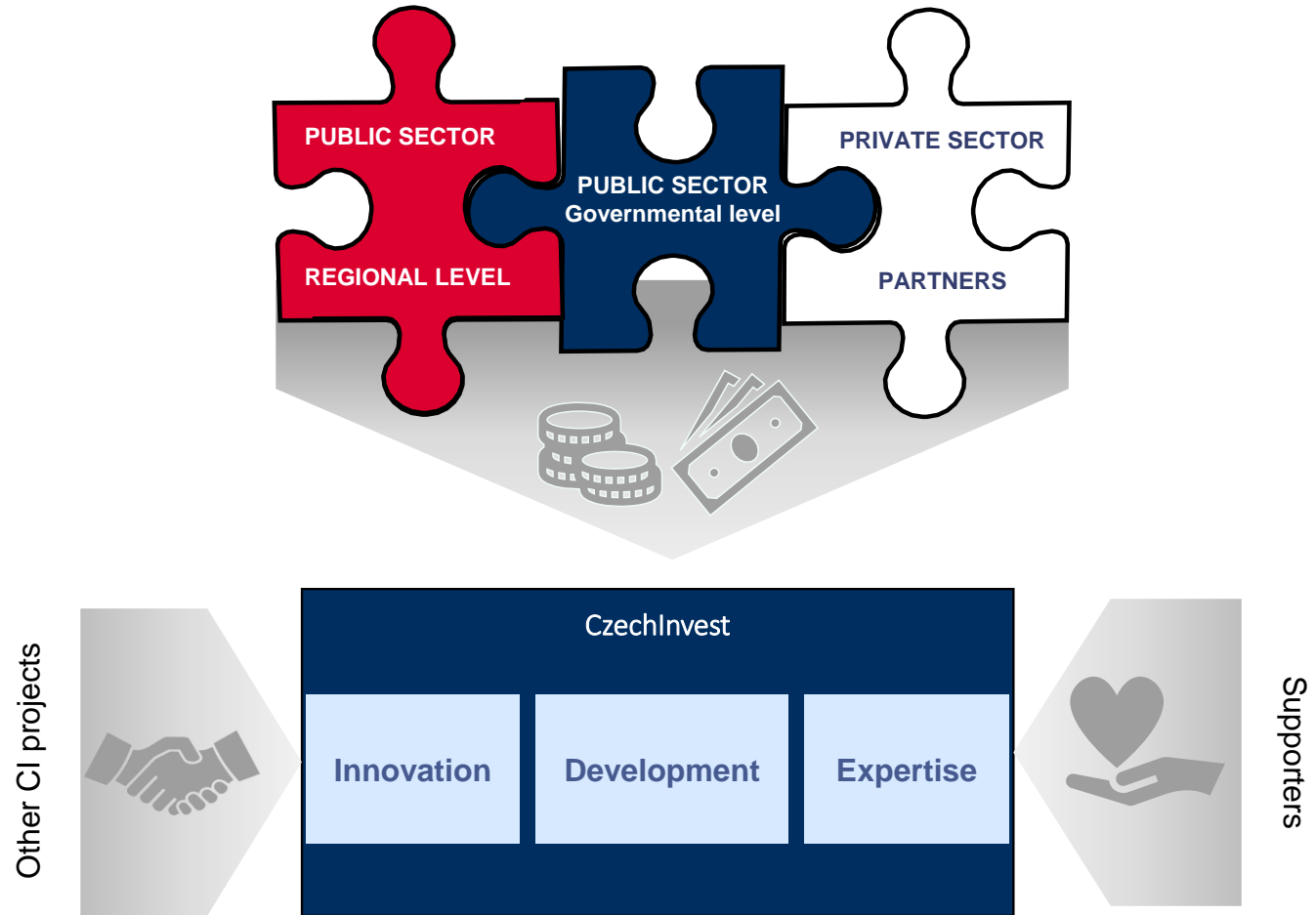


### Smart Factory

Manufacturing processes involving the digitalization, robotization and automation of most of today's human activities.

# Concept

Cooperation is the key



# Key Pillars



## Innovation & start-up support

Main goal is to capture and support innovative technology projects with good business potential, right from the early stages of development with set of supporting tools.



## Development & partnership

Only the involvement of partners across sectors will ensure the successful implementation of the project and effective support of the innovative solutions.



## Expertise

A knowledge platform that will become a unique source of information and input for changes in sectors related to mobility and for more efficient decision-making process in public administration.





# Thank you for your attention!

**Karolina Konicarová**

[karolina.konicarova@czechinvest.org](mailto:karolina.konicarova@czechinvest.org)

+420 296 342 417

[www.czechinvest.org](http://www.czechinvest.org)



**Connect  
& Support**