

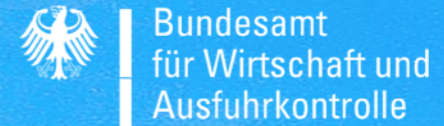
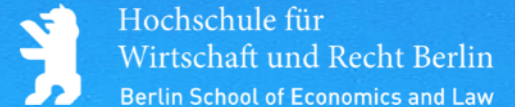
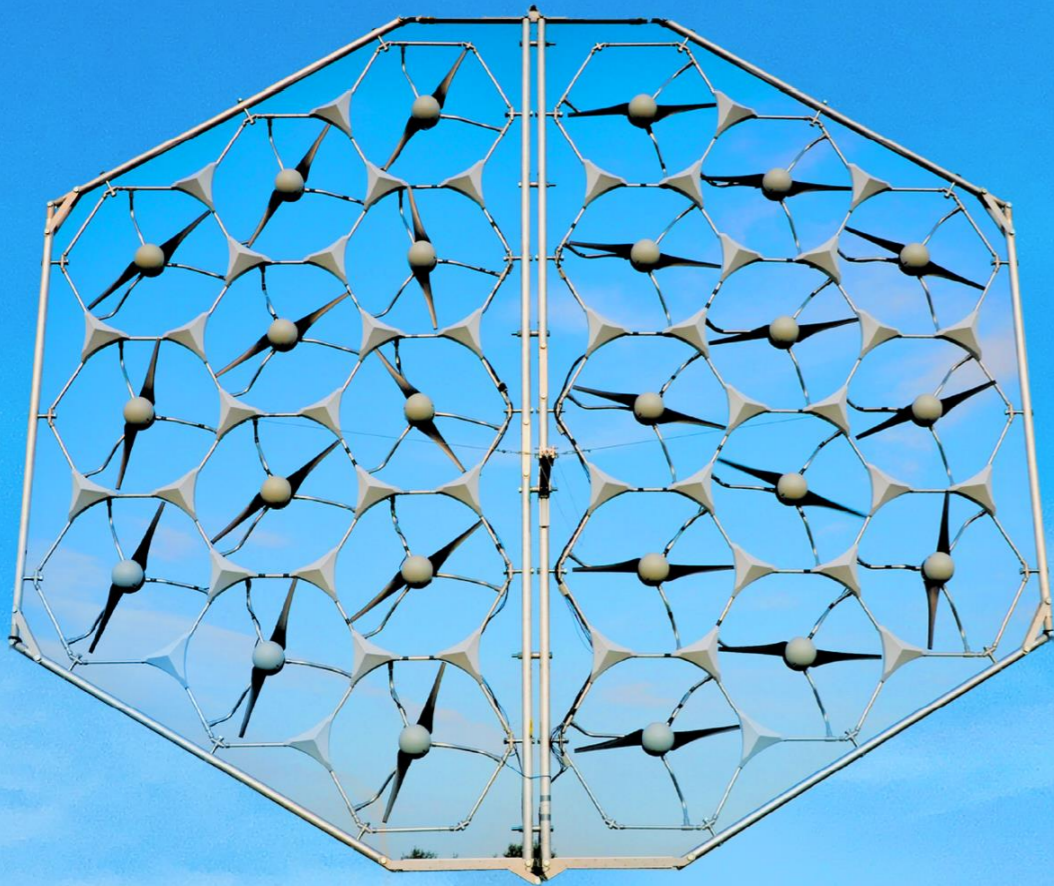


**MOWEA**  
Modular Wind Power

EFFICIENT | SCALABLE | EVERYWHERE



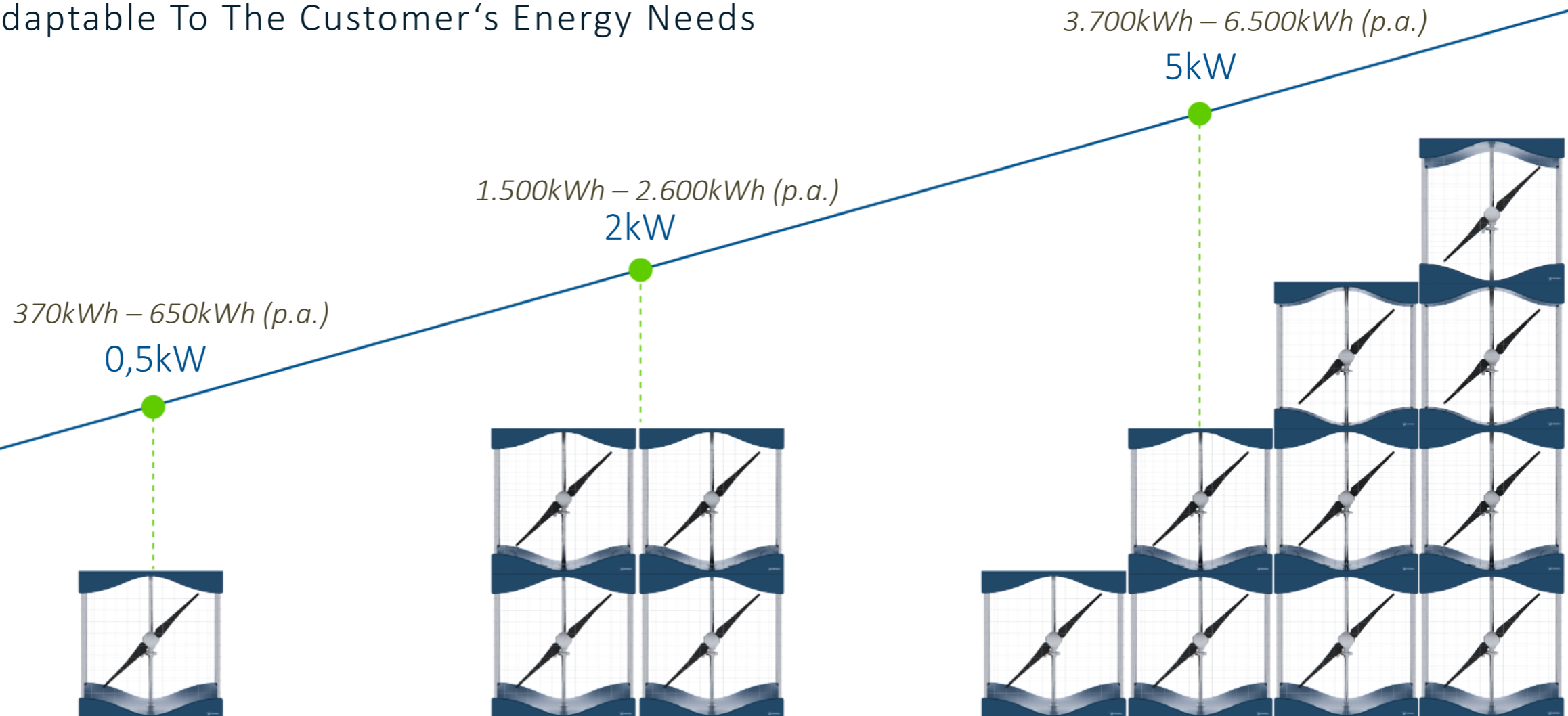
*MOWEA® presents the world's first Modular Wind Power System™ (MWPS™) – Next generation technology integrates standardized micro wind turbines into a singular renewable energy system deployed in a flexible and scalable design.*



# WIND POWER ACCORDING TO THE MODULAR PRINCIPLE

Clean On-Site Wind Energy

Flexibly Adaptable To The Customer's Energy Needs



\*\*Avrg: wind speed 4-5 m/s\*\*

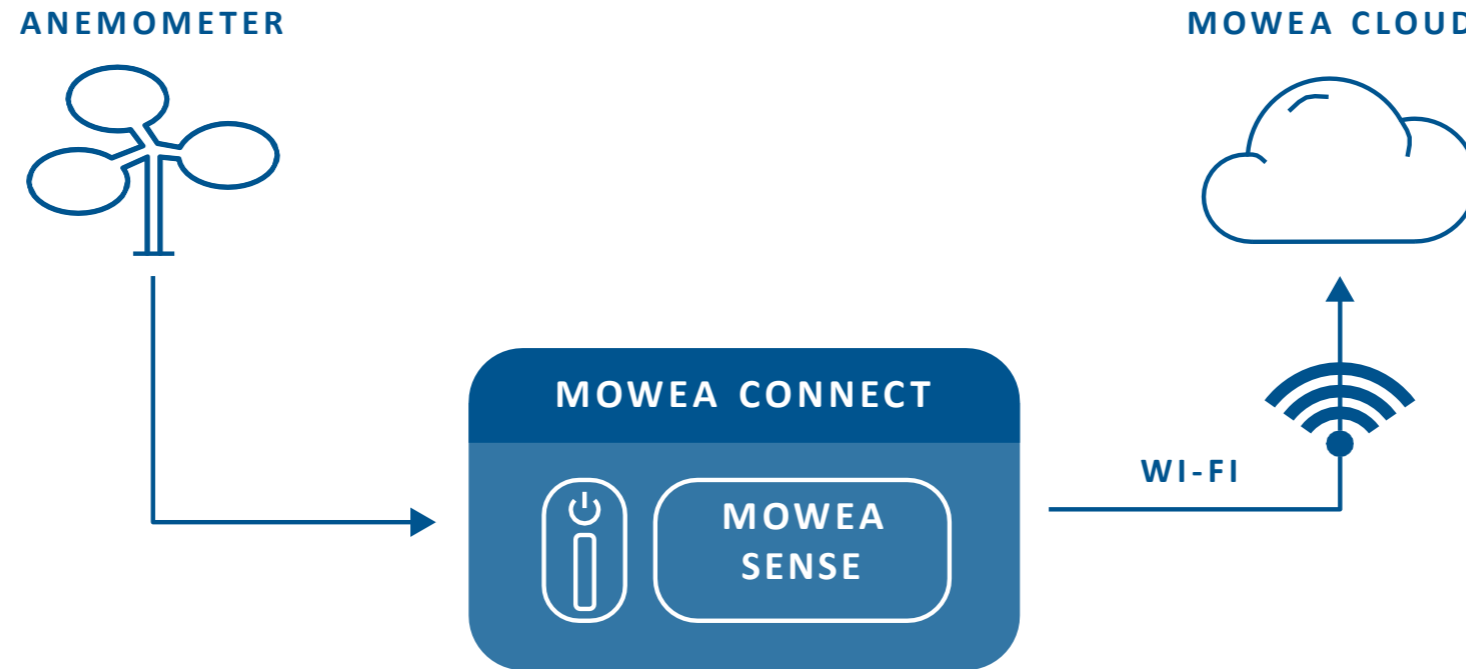


## ***Product Innovation***

- *Increased efficiency*
- *Considerable cost reduction in production, transport and maintenance*
- *Flexible use cases*
- *Less failure rate*

## ***Incremental Optimisation***

- *Optimised aerodynamics for low wind speeds*
- *Reduced noise emissions and vibrations*
- *Optimised machine control (MPPT algorithm)*
- *Remote control & Error Detection*



- Collects and analyzes data, e.g. wind speed, current, voltage and operating status of each turbine.
- Enables remote access to the turbine anytime, including an automatic break activation (storm protection).
- The collected data is send to MOWEA Cloud for customer access and monitoring.

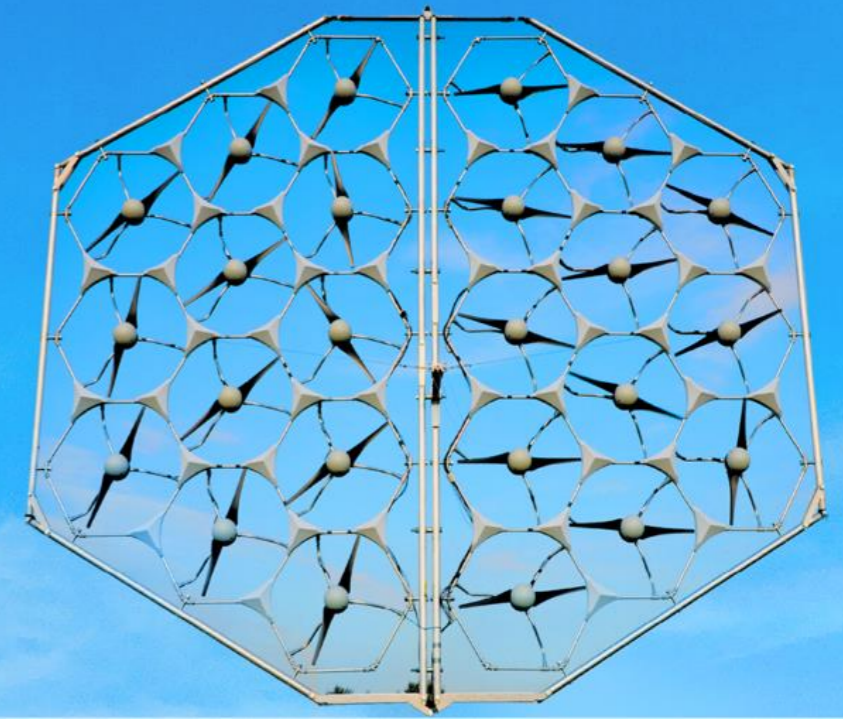
## TELECOMMUNICATIONS

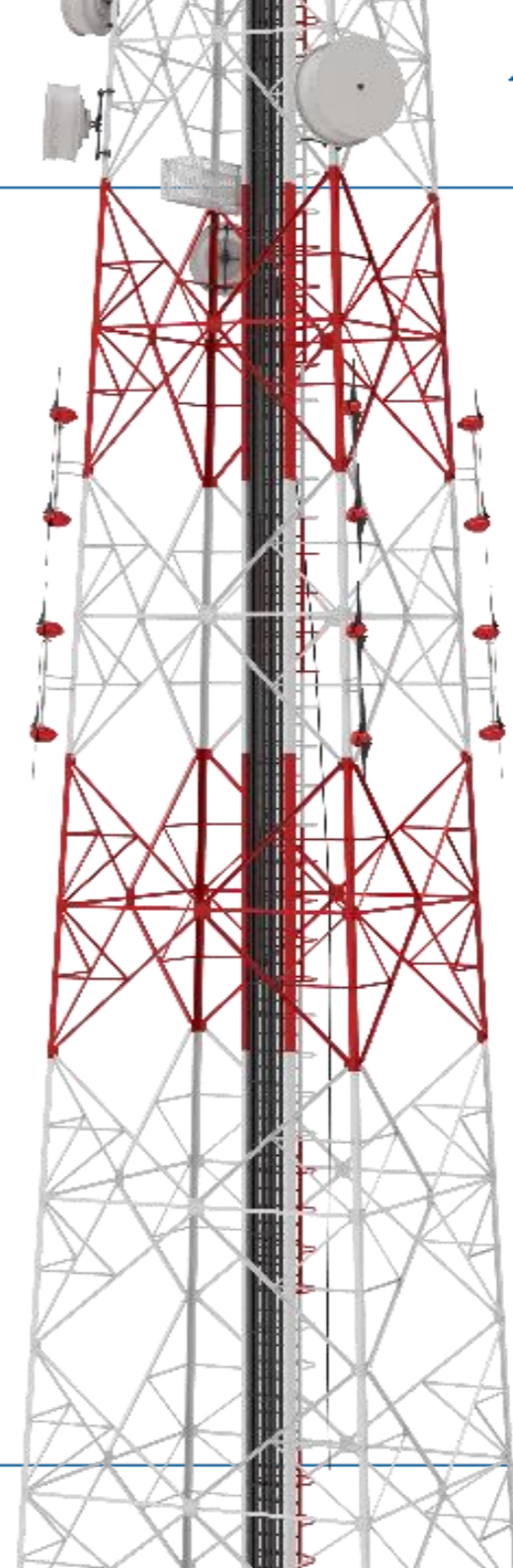


## REAL ESTATE



## OPEN SPACES





MOWEA and VODAFONE launch Germany's first  
**"MOBILE COMMUNICATIONS WINDMILL"**



<b>NUMBER OF TURBINES</b>	<b>2</b>
<b>NOMINAL CAPACITY</b>	<b>1 kW</b>
<b>ROTOR DIAMETER</b>	<b>1.7 m</b>
<b>START WIND SPEED</b>	<b>3,5 m/s</b>
<b>ENERGY OUTPUT AT 5 m/s</b>	<b>Approx. 1500 kWh/year</b>
<b>Yaw System</b>	<b>360 degrees</b>





**Nominal Power:**  
0,5kW

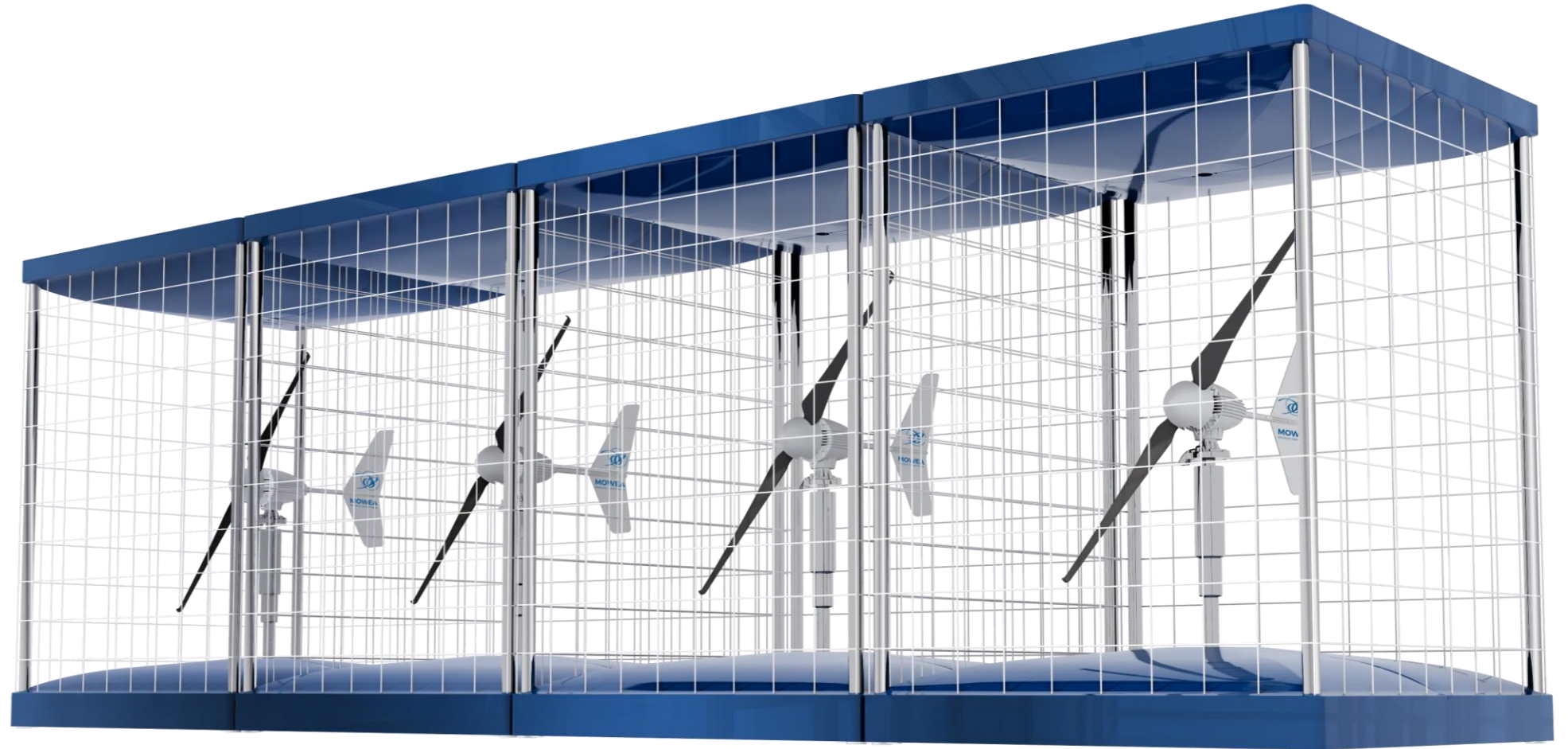
**Rotor Diameter:**  
1,7m

**Start Wind speed:**  
3 m/s

**Yaw System:**  
360 degrees

**Size:**  
Approx. 2mx2m

**Weight:**  
Approx. 35kg





- [Winner At Telekom's 5G Sustainability Award](#)
- [Winner At Apti Awards In Sustainable PropTech](#)
- [VerbundX Startups And Tech Champions](#)
- [Winner at Electronica Fast Forward Award](#)
- [Finalist at Builtworld Innovation Contest for Smart City Solutions](#)

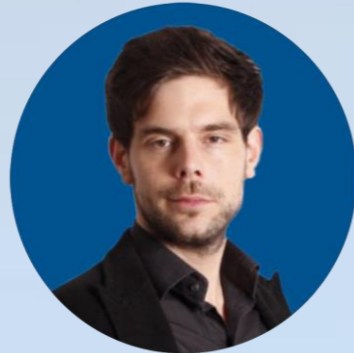


- [Vodafone startet Deutschlands erste 'Mobilfunk-Mühle'](#)
- [Ein Berliner Startup entwickelt Windkraftanlagen nach dem Lego-Prinzip \(businessinsider.de\)](#)
- [These Wind Turbines Could Change Cities Forever - hubraum](#)
- [Strom für vierköpfige Familie selbst machen: Mit Mini-Windrad statt Solaranlage - EFAHRER.com \(chip.de\)](#)
- [Windenergie 4.0: So funktioniert moderne Stromgewinnung \(vodafone.de\)](#)
- [Der 2-Stufen-Plan für digitalen Klimaschutz \(vodafone.de\)](#)
- [Die weltweit erste modulare Windkraftanlage - energiezukunft](#)
- [Ein Berliner Startup entwickelt Windkraftanlagen nach dem Lego-Prinzip \(businessinsider.de\)](#)



**Dr. TILL NAUMANN**  
Founder & CEO

R&D | Operations Management | Finance Management | Marketing | Sales



**ROBERT JOHNEN**  
Managing Partner



**LUKAS JOBB**  
Managing Partner

Produktmanagement | Produktentwicklung



## ADVISORY BOARD



**Volker Wendland**  
Business Advisor / Sales Partner



**Tyler Schmetterer**  
Business Advisor / Sales Partner



**Andrea Licata**  
Greentech Influencer | Business Advisor

## Partner





## CONTACT US!



Storkower Str. 115A  
D-10407 Berlin / Germany



+49 (0)30 23 52 61 11



[kontakt@mowea.world](mailto:kontakt@mowea.world)